

NEWSLETTER

# thrive

## HOME SCHOOL ACADEMY

**ENRICH • DISCOVER • CREATE**

### FALL HAS ARRIVED

The weather is making its change-over and we are all beginning to feel it! The sweaters, jackets, and beanies will begin showing up and we want to make sure they all make it back home. Add your family name to items to help us make that happen.

This month we have our High School Fall Social, Fall Break and then we close out the month with our Annual Holiday Bazaar. We hope you are able to come and shop your little heart out!

#### In this Newsletter

- Quick Links .....p.1
- Annual Bazaar.....p.2
- Student Drop-off, Pick up and Upcoming Events...p.3
- Library Hours, Lost and Found and PPSC info..... p.4
- Theme Week, New Website and Free Resources... p.5

#### QUICK LINKS

[Thrive Home Page](#)

[THSA Code of Conduct](#)

[HSD2 Dress Code](#)

[Bell Schedules](#)

[Facebook](#)

# This event is open to the public!

mark your calendars for our Annual Holiday Craft Bazaar!

**thrive**  
HOME SCHOOL ACADEMY  
ENRICH • DISCOVER • CREATE

## HOLIDAY CRAFT BAZAAR

JOIN US FOR CRAFTS, MUSIC  
AND DELICIOUS TREATS!

---

NOVEMBER 27 • 9:00AM-2:00PM

THRIVE HSA GYM  
2400 SLATER AVE, C/S 80905

This is an event we are very excited to sponsor again this year! It is an atmosphere of cheer and delight. This event is a win for every participant. It provides crafters a forum to display their goods and a venue for our community to shop locally. We encourage you to join us and make the most of this wonderful event!

# THANK YOU SO MUCH FOR YOUR SUPPORT AT PICK UP

## CAR PICK-UP LANE

The parking lot has had a makeover! We have new lines painted and directional signs on the ground. Please continue to be aware of the entry and the exit to allow for traffic to flow. Please do not block these, particularly during school pick-up. We appreciate you!

## WALK-IN PICK-UP

If you want to pick up your students at the end of the day, please come to the front office and sign in. Someone will get your student for you. Thank you for your patience.

### \*\*\*FOLLOW-UP WITH US\*\*\*

We recognize the possibility of our communications being missed. If we have not responded to an email or phone call in a timely manner please reach back out after 24 hours. We have more families than ever before and are adjusting, but please don't hesitate to reach back out to us after two days. It is always our goal to make sure our families have answers to their questions as promptly as possible.

## UPCOMING EVENTS

# November

High School Social: 10th November

FRIDAY DIRECTLY AFTER SCHOOL 3:30-5:30PM

Twins Week: 13th-17th November

Last Week of Clubs : 13th-17th November

UNLESS OTHERWISE SCHEDULED

School Closed: 20th-24th November

FALL BREAK

Holiday Bazaar: 27th November 9-2pm

\*SEE EMAIL SENT OUT OCTOBER 27TH FOR MORE DETAILS\*

2ND Sem. Club Sign-up Email: 1st December

SUN	MON	TUE	WED	THUR	FRI	SAT
			1	2	3	4
5	6	7	8	9	10 H.S. Social	11
12	13	14	15	16	17	18
		-----Last Week of Clubs-----				
		-----Twins Week-----				
19	20	21	22	23	24	25
		-----School Closed-----			Thanksgiving	
26	27 Holiday Bazaar	28	29	30	DEC 1 Club Sign-up	

**LIBRARY HOURS**

Monday by appointment  
 Tuesday- Friday 8:30-4:00pm



- If you ever need to check out materials from the library and our office happens to be closed, we have a solution for you! Simply take pictures of the barcodes on the books or resources you need and email them to atesen@hsd2.org. Please make sure to include your student's first and last name in the email.

**LOST AND FOUND**

Our lost and found collection seems to be growing by the day! With the weather changing, it's not uncommon for items to go missing. If you or your child have misplaced something, please make sure to stop by and check our lost and found area. We highly encourage you to label jackets and other personal belongings to help us reunite them with their rightful owners.



**Water Bottles:** As we approach winter break, we like to remind our families about our school's practice regarding unclaimed water bottles. At the end of winter break and the end of the school year, any unclaimed water bottles will be donated. We kindly request that you label your child's water bottle to ensure it doesn't get donated.

**All materials:** At the end of the year all items remaining in the lost and found will be donated to a nearby thrift store at the end of the year.

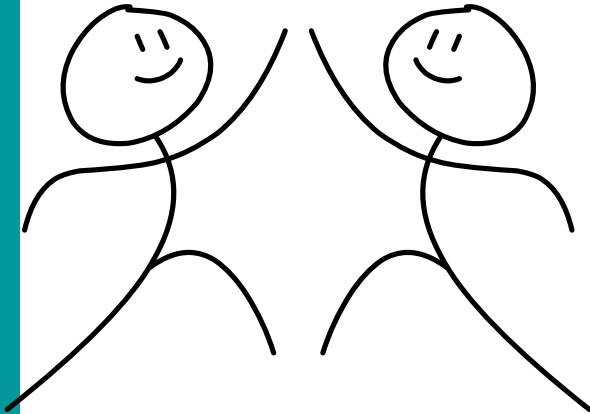
**PPSC****PIKES PEAK STATE COLLEGE – CONCURRENT ENROLLMENT PROGRAM:**

For assistance with any PPSC questions please contact Ms. Erin Crutcher at [ecrutcher@hsd2.org](mailto:ecrutcher@hsd2.org)



**SCHOOL THEME WEEK****Twins  
Day**

WEEK

**PICK A FRIEND AND DRESS ALIKE!**

**\*All clothing choices must comply with THSA's school dress code.  
See link on p. 1 for HSD2 dress code**

**THSA THEME WEEK SCHEDULE 2022-23**

**2023** | Nov 13-17 | Dec 18-22  
**2024** Jan 15-19 | Feb 19-23 | Mar 18-22  
 | Apr 15-19

**HOME SCHOOL RESOURCES**

**www.PPLD.org** offers a plethora of classes at their various locations. Some of the classes they offer in **November** include: **ASL**, **Coding**, **Art Design**, **3D printing**, and they also have a **Gaming**. This link will take you the November calendar:

**PPLD November Classes**

Hover your mouse over the class name and more information about the class is provided.